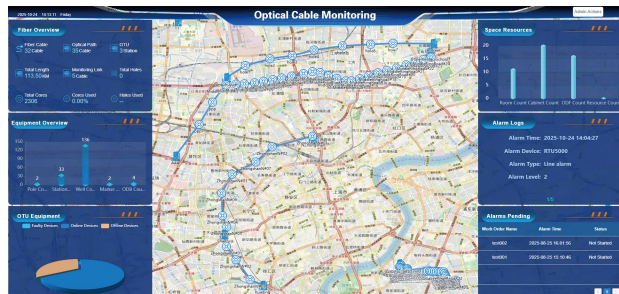




RTU5000 Monitoring Platform



- Support customized multi-channel monitoring(1 to 16)
- Complete and compact (1U)
- Combine OTDR unit (45dB Max), optical switch, WDM, main control board and power supply module
- Support dark fiber and live fiber monitoring
- Support Provide standard RJ-45 Ethernet and 4G dual network connection
- Periodic OTDR monitoring and Advanced GIS-based fault mapping&active alarm
- Visual management of resources (Cable, RTU equipment, computer rooms, ODF, manhole, cabinet, etc on PC platform)

Items	Specifications
RTU5000 Base Unit	
Optical port number	1~16
Network Interfaces	ETH 10/100Mbps+LTE-Cat.1
Optical port	LC/UPC or LC/APC
Height	1U
Width	Standard 19 inch rack
Dimension	438mm×300mm×45mm(L×W×H)
Working temperature	-10~+50℃
Storage temperature	-20~+70℃
Relative humidity	0% to 95% (non-condensing)
Power supply	AC 110-240V, ≤0.5A, 50-60Hz and DC 48V power supply
OTDR Module	
Monitoring wavelength (Customization supported)	1310nm/1550nm single wavelength (Dark fiber)
	1310nm+1550nm dual wavelengths (Dark fiber)
	1625nm/1650nm/1490nm single wavelength (Online Monitoring)
Dynamic range	35dB~45dB
Pulse width	3ns,5ns,10ns,30ns,50ns,100ns,275ns,500ns,1us,2us,5us,10us,20us
Event deadzone	0.8m
Attenuation deadzone	3.5m
Sampling resolution	0.05~4m
Distance resolution	0.01m
Test range	500m~265km
Sampling points	Max 256,000
Distance accuracy	±(0.75+3×10 ⁻⁵ ×Test distance+Sampling resolution)m
Linearity	±0.03dB/dB
Optical Switch	
Output port number	1~16
Insertion loss	<1.2dB
Working wavelength range	1200nm~1650nm
Switching time	≤25ms
Working life	≥1 million(10 ⁶)
Return loss	≥45dB
Isolation	≥55dB
Directivity	≥60dB
Optical interface	LC/UPC or LC/APC
WDM	
Reflection Wavelength	1260nm~1580nm
Insertion loss	<1dB
Return loss	≥45dB
Isolation	≥40dB
Directivity	≥50dB
Optical interface	LC/UPC or LC/APC