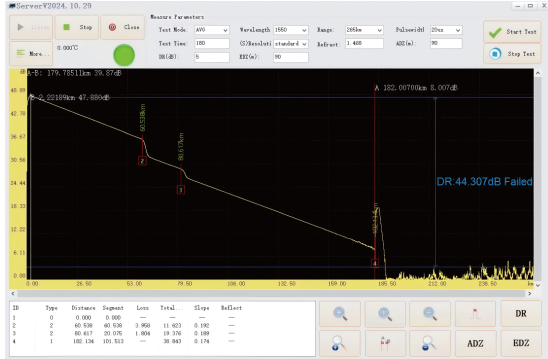




RTU-4000 Integrated monitoring equipment



- Integrating OTDR, optical switch, WDM and PCB
- Support customized multi-channel (1~16 channels) monitoring optical ports
- The dynamic range of OTDR module can reach up to 45dB; Deadzone performance 1m/4m
- Support dark fiber and live fiber monitoring
- Support automatic setting of IP address
- The communication interface supports RJ45 network port and RS232 serial interface
- Suitable for integrated deployment of fiber optic monitoring network

Items	Specifications
Base Unit	
Optical port number	8(Customizable number of other channels)
Network Interfaces	RJ45
Optical port	LC/APC
Height	1U
Width	Standard 19 inch rack
Dimension	438mm×300mm×45mm(L×W×H)
Working temperature	-10~+50℃
Storage temperature	-20~+70℃
Relative humidity	0% to 95% (non-condensing)
OTDR Module	
Monitoring wavelength	1625nm (1550nm or 1650nm is optional)
Dynamic range	35dB~45dB
Live fiber monitoring	Support
Pulse width	3ns,5ns,10ns,30ns,50ns,100ns,275ns,500ns,1us,2us,5us,10us,20us
Event deadzone	1m
Attenuation deadzone	4m
Sampling resolution	0.05~4m
Distance resolution	0.01m
Test range	500m~265km
Sampling points	Max 256,000
Distance accuracy	±(0.75+3×10 ⁻⁵ ×Test distance+Sampling resolution)m
Linearity	±0.03dB/dB
Optical Switch Unit+FWDM	
Output port number	8(Customizable number of other channels)
Fiber type	SM; LC/APC
Pass Band Wavelength	1610~1680nm
Reflection Band Wavelength Range	1260~1590nm
Insertion loss	MON-COM:≤2.0dB; LINE-COM:≤0.8dB
Isolation	MON-COM:≥15dB; LINE-COM:≥30dB
Return loss	≥50dB
Repeatability	≤±0.05dB
Switch time	≤15ms
OSW working life	≥10 ⁹

Let's go in the grandway!

