

Optical Fiber Cleaver(GW950)



Usage and safety regulation:

- Before using fiber cleaver, please read this manual carefully;
- Be cautious to use in case harm;
- Do not touch the blade with hand when use or repair ;
- Do not take down or oil ;
- Keep away from humid and dusty environment.

Technical specifications:

Model no.	OPTICAL CLEAVER GW950
Cleaver Type: Precision fibre Cleaver Single fibre Cleaver	Precision Fiber cleaver Single fiber cleaver
Fibre type	Single Core silex-fiber
Fibre diameter	125 μ m
Coating Diameter/Outer diameter	Coating Diameter: ϕ 0.25mm & ϕ 0.9mm Jacket 0.25mm & 0.9 mm Outer Dia of patchcord: 0.9mm Outer Dia of pigtail: 2mm or 3mm Outer Dia of drop cable: 2mm & 3mm
Cleave length	9~16mm(ϕ 0.25) 10~16(ϕ 0.9)
Cleave angle	$\leq 0.5^\circ$
Blade life time	48000
Number of blade positions, no. of heights and Number of cleaves per position	Blade position: 16 Cleaves per position :3000 16*3000=48000
Number of steps in cleaving	Instructed in Manual.

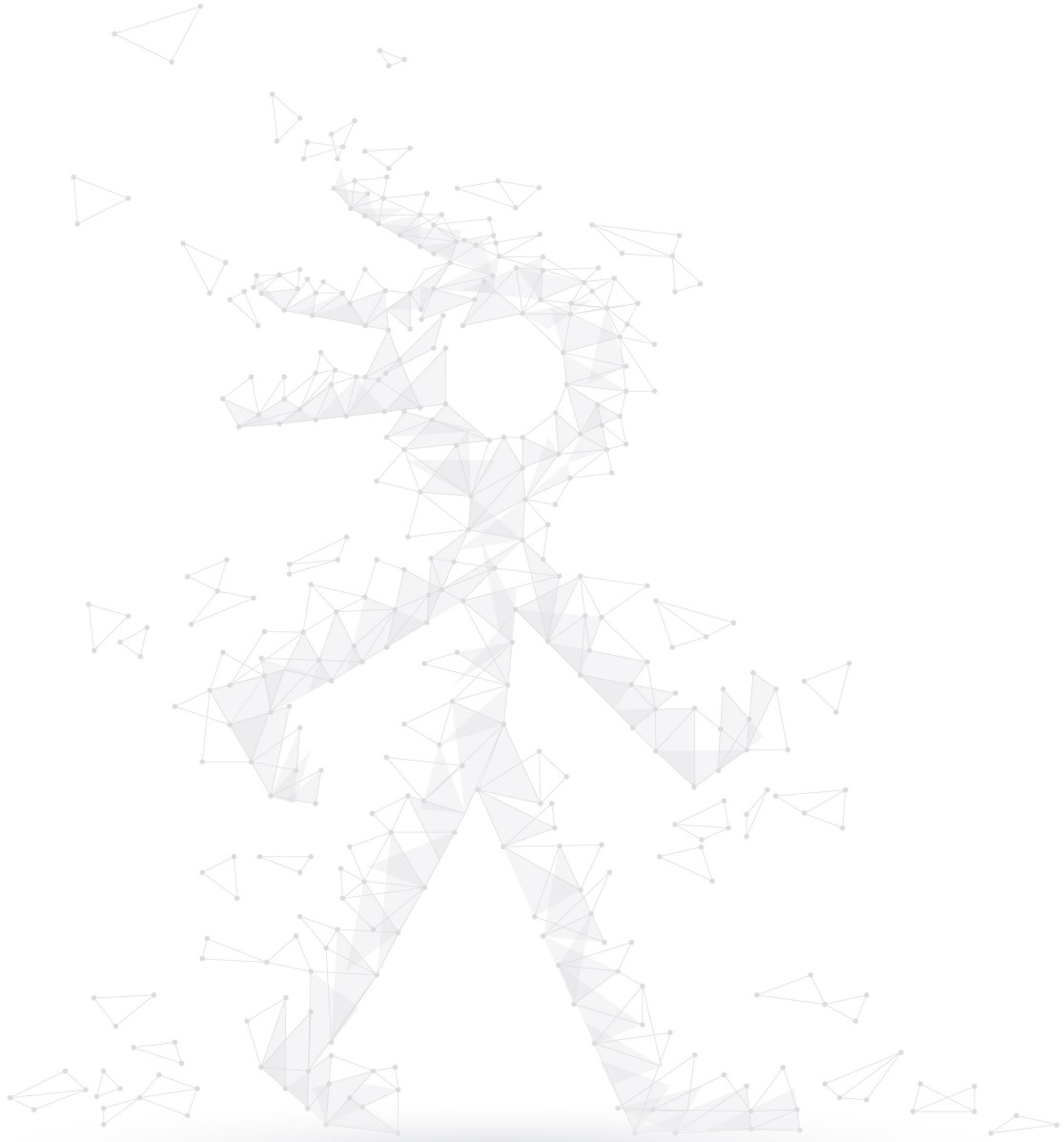


Model No.	GW950
Fibre Holder type and fibre holding plate	The Cleaver can hold below mentioned: Jacket 0.25mm & 0.9 mm Outer Dia of patchcord: 0.9mm Outer Dia of pigtail: 2mm or 3mm Outer Dia of drop cable: 2mm & 3mm
Dimension, including fibre scrap collector	94W*92D*52H(mm)
Weight	185g
Integral components (Labelled diagram to be provided depicting parts/ sub-assemblies)	<ol style="list-style-type: none"> 1. Suitable for cutting all kinds of single-core fibers; 2. Simple appearance, stable and reliable, easy to carry; 3. The standard combination clamp is suitable for a variety of linear clamping of single-core fiber; 4. Well-crafted core components: <ol style="list-style-type: none"> 4a: The cutter body is made of high-quality aviation duralumin and CNC equipment, with high precision and no deformation; 4b: The blade is made of ultra-fine material code steel, the edge is mirror-ground, and there is no visible gap under a 300-fold microscope; 4c: Thickened high-rigidity slide rail, with low push resistance, stable operation, impact resistance and long service life; 4d: The rubber pressure pad is made of vulcanized imported material, which has good elasticity, does not expand for a long time, does not change shape, and has stable clamping;
Operation condition	NA
Storage condition	Avoid moisture and stay dry
Resistance feature (Shock/ Dust/ Rain)	test certificate provided.
Standard Accessories: <ol style="list-style-type: none"> 1. Carrying case - Hard/ soft 2. Operation/ instruction manual 3. Fibre plate depending on cleave length and fibre dia or 2mm to 3mm patch cord or drop cable. 4. Fibre Holder 	<ol style="list-style-type: none"> 1. Carrying case - Hard 2. Operation/ instruction manual: provide 3. Fibre plate depending on cleave length and fibre dia or 2mm to 3mm patch cord or drop cable



Optional accessories - 1. Fibre Scrap Collector (Fixed or detachable type) 2. Hand wrist band	Fiber Scrap collector(detachable) Hand wrist band provide with cleaver
LOA/ MOU between OEM and Vendor	
Sample for Demo (Lab and field trial)	Need mail from Reliance for demo
Company profile/ Infrastructure details/ ISO certificate	Have ISO Certificate





Let's go in the grandway!



800-819-8191 400-619-8191

