

FHO1000 Hand-held OTDR



Description:

FHO1000 Handheld OTDR is the latest smart OTDR of Grandway. Although it is a handheld OTDR, it can measure the length of optical fiber over 100km. In short distance optical fiber testing, with the excellent 1m/4m deadzone performance, all kinds of continuous connectors, attenuation loss and other events can be clearly distinguished.

FHO1000 is equipped with 1310nm and 1550nm dual wavelength OTDR, optical power meter, stable laser source, 10mw VFL, RJ45 line sequence measurement and other functions. At the same time, it has bluetooth wireless connection and supports pairing with mobile phones.

Features:

- 3.5 inch color LCD, portable design and easy to carry.
- Multi function integration, support 10mw VFL, stable laser source, optical power meter, RJ45 line sequence test and other functions.
- High precision, short deadzone OTDR can accurately test all kinds of continuous connectors and attenuation points in the line.
- 28dB dynamic support over 100km optical fiber measurement.
- Simple mode and expert mode are convenient for application in different scenarios.
- Bluetooth connection of mobile phone supports fast transmission of test files to mobile phone.
- Mobile phone remote control, control OTDR test and curve view analysis through the mobile phone.



Let's go in the grandway!

Specifications:

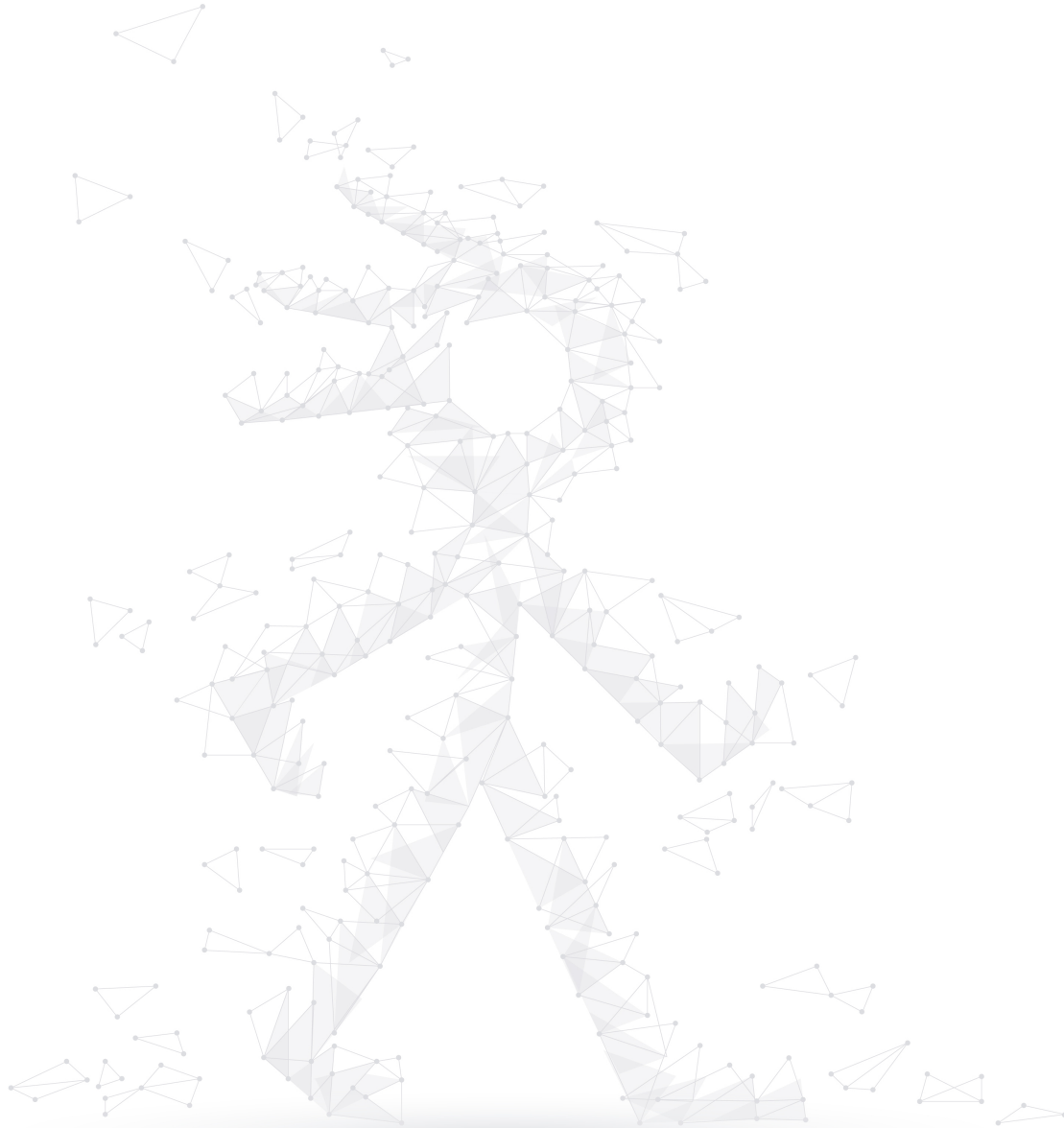
Items	Specifications
Fiber type	SMF (ITU-T G.652)
Wavelength	1310±20nm/1550±20nm
Dynamic range	28/26dB
Test range	1km, 2km, 5km, 10km, 20km, 40km, 80km, 120km
Pulse width	3ns/5ns/10ns/30ns/50ns/100ns/275ns/500ns/1us/2us/5us/10us/20us
Event deadzone ^①	≤1m
Attenuation deadzone ^①	≤4m
Refractive index	1.30000~1.70000
Sampling points	64000
Sampling accuracy	0.05m (1km)
Distance accuracy	±(1m+test distance×3×10 ⁻⁵ +sampling resolution) (excluding IOR uncertainty)
Loss accuracy	0.1dB
Linearity	0.1dB
Reflectance accuracy	±2dB
Event display	1) Fiber end 2) Reflection event 3) Splice loss
VFL	Working wavelength: 650±10nm Output: 10mW, CW/1Hz/2Hz
Stable OLS	Working wavelength: 1310±20nm/1550±20nm Output > -13dBm, CW/270Hz/1kHz/2kHz
OPM	Calibrated wavelength: 850/1300/1310/1490/1550/1625/1650nm Test range: -70~+10dBm
RJ45 line sequence test	TIA568-A and TIA568-B standard
Optical interface	OTDR: standard FC/UPC, optional SC/UPC, FC/APC, SC/APC VFL: 2.5mm universal port OLS: share the OTDR port OPM: 2.5mm universal port
Electrical interface	RJ45 port×2, RJ45 remote module USB Type-C
Wireless	Bluetooth
Data storage	Pluggable 16GB micro SD card
Battery	8000mAh lithium battery
Working humidity	0~85%(non condensing)
Working temperature	-10~50℃
Dimension	192.9×93.8×47mm



Weight	0.57kg
--------	--------

Notes:

- 1, Deadzone test conditions: event deadzone return loss $> -45\text{dB}$, attenuation deadzone return loss $> -55\text{dB}$.
- 2, The product shell color is optional purple/blue/orange.



Let's go in the grandway!

